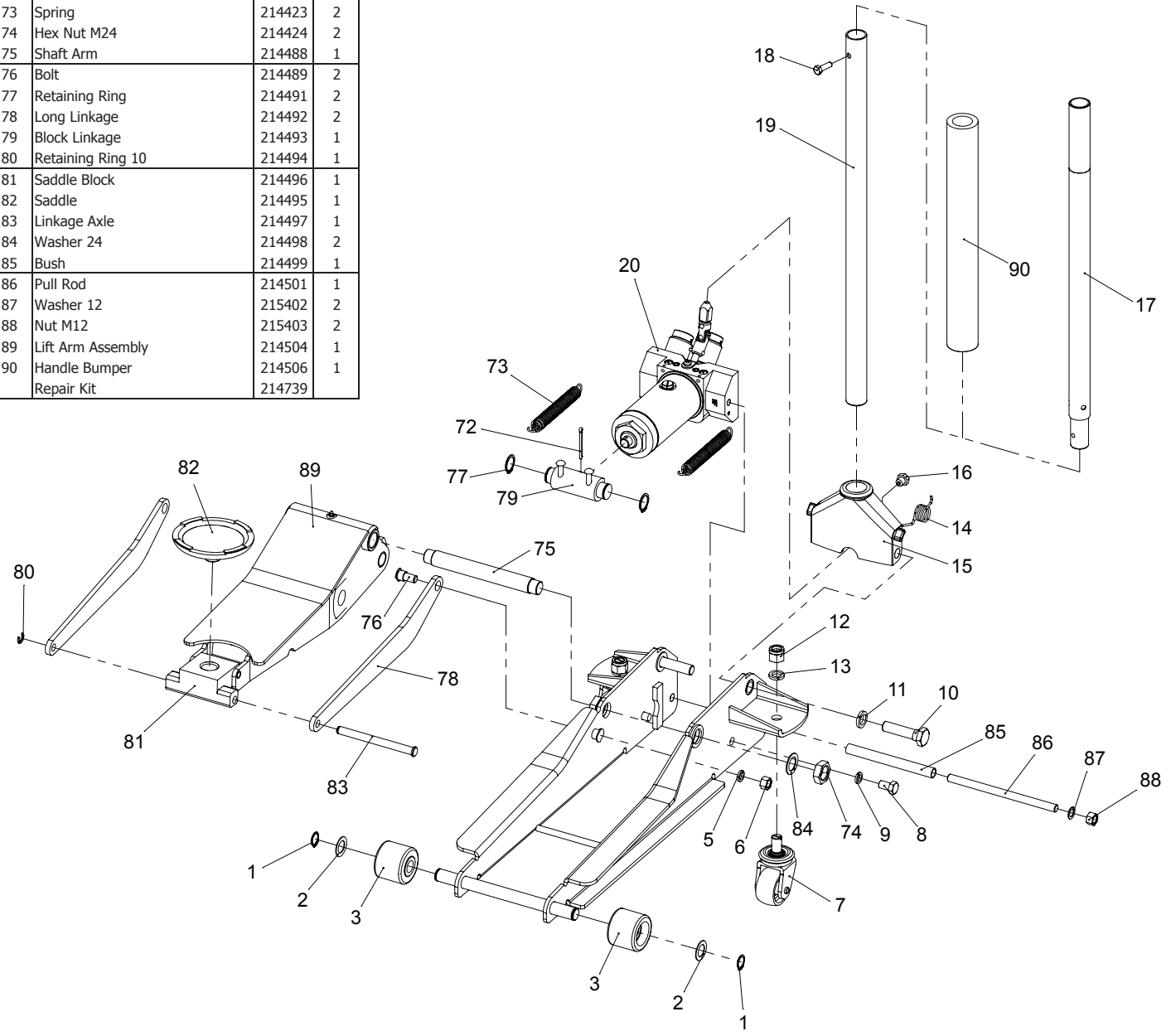


INDEX NO.	DESCRIPTION	PART NO.	REQ'D NO.
1	Retaining Ring	214401	2
2	Washer	214402	2
3	Wheel	214403	2
4	Side Plate Assembly	N/A	
5	Washer M16	214404	2
6	Hex Nut M16	214406	2
7	Caster Assembly	214407	2
8	Hex Bolt M12X25	214408	2
9	Spring Washer	214409	2
10	Bolt	214411	2
11	Spring Washer	214412	2
12	Nut M18	214413	2
13	Spring Washer 18	214414	2
14	Torsion Spring	214416	1
15	Handle Socket	214417	1
16	Bolt	214418	1
17	Upper Handle	214419	1
18	Hex Bolt M8X25	214421	1
19	Lower Handle	214422	1
20	Power Unit Assembly	214425	1

INDEX NO.	DESCRIPTION	PART NO.	REQ'D NO.
72	Split Pin 4X25	214507	1
73	Spring	214423	2
74	Hex Nut M24	214424	2
75	Shaft Arm	214488	1
76	Bolt	214489	2
77	Retaining Ring	214491	2
78	Long Linkage	214492	2
79	Block Linkage	214493	1
80	Retaining Ring 10	214494	1
81	Saddle Block	214496	1
82	Saddle	214495	1
83	Linkage Axle	214497	1
84	Washer 24	214498	2
85	Bush	214499	1
86	Pull Rod	214501	1
87	Washer 12	215402	2
88	Nut M12	215403	2
89	Lift Arm Assembly	214504	1
90	Handle Bumper	214506	1
	Repair Kit	214739	



REPLACEMENT PARTS

MODEL NO.
71233

CAPACITY
2 TON

DESCRIPTION
HYDRAULIC FLOOR JACK W/ DOUBLE PUMP PISTON

