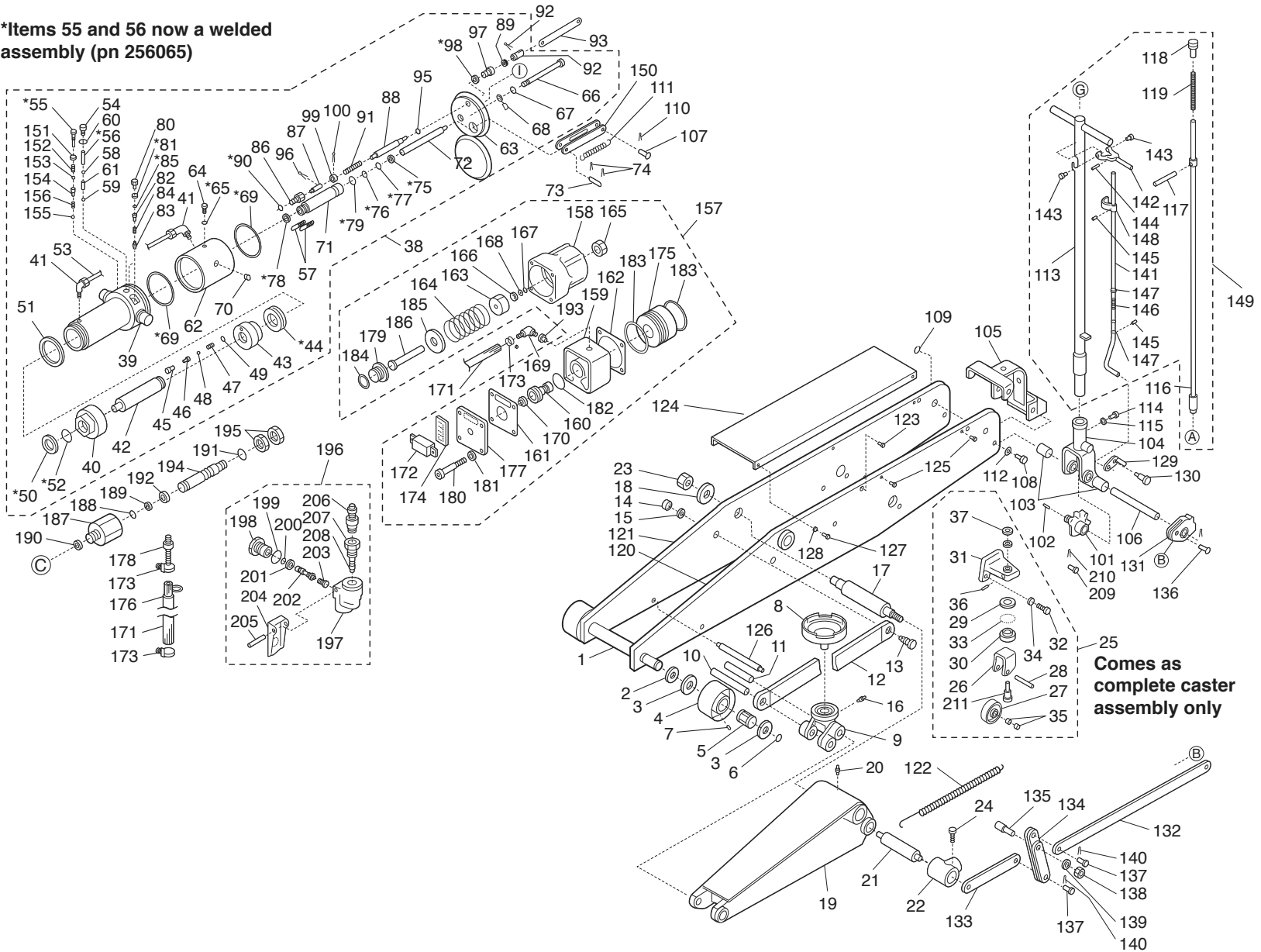


\*Items 55 and 56 now a welded assembly (pn 256065)



REPLACEMENT PARTS

MODEL NO.  
715050E

CAPACITY  
5 TON

DESCRIPTION  
AIR AND HYDRAULIC FLOOR JACK



INDEX NO.	DESCRIPTION	PART NO.	REQ'D NO.	INDEX NO.	DESCRIPTION	PART NO.	REQ'D NO.	INDEX NO.	DESCRIPTION	PART NO.	REQ'D NO.	INDEX NO.	DESCRIPTION	PART NO.	REQ'D NO.
1	Front Axle	256001	1	54	Valve Cap	256181	1	107	Receiver Pin	256127	1	160	Valve	218499	1
2	Axle Nut	256002	2	55	Valve Cap	256182	1	108	Bolt	256128	4	161	Gasket	218498	1
3	Axle Washer	256003	4	56	Separator Bar (Long)	256063	2	109	Retaining Ring	256129	1	162	Gasket	218494	1
4	Front Wheel	256004	2	57	Screen Filter	256064	2	110	Cotter Pin	256131	1	163	Nut	218487	1
5	Front Wheel Bearing (Set)	256005	2	58	Checkball	256066	2	111	Spring	256132	1	164	Spring	218488	1
6	Retaining Ring	256006	2	59	Checkball	256067	1	112	Lockwasher	256133	4	165	Nut	218479	2
7	Grease Zerk Fitting	256007	2	60	Copper Washer	256068	2	113	Handle Tube	256188	1	166	Back-up Retainer	256216	1
8	Saddle	256008	1	61	Separator Bar (Short)	256069	1	114	Receiver Bolt	256136	1	*167	Back-up Ring	256217	1
9	Saddle Base	256009	1	62	Reservoir	256183	1	115	Lockwasher	256137	1	*168	Seal	256218	1
10	Guide Arm Shaft	256011	1	63	Tank Cap	256184	1	116	Control Rod	256138	1	169	Elbow	256196	1
11	Saddle Base Shaft	256012	1	64	Screw	256073	1	117	Control Lever	256139	1	170	Rubber Cushion	256197	1
12	Guide Arm	256013	2	*65	Packing	256074	1	118	Handle Cap	256141	1	171	Air Hose	256198	1
13	Guide Arm Pivot Bolt	256014	2	66	Bolt	256076	1	119	Handle Spring	256142	1	172	Muffler Cover	218313	1
14	Pivot Screw Nut	256016	2	67	Lockwasher	256077	1	120	Left Frame Side Plate	256030	1	173	Hose Band	256199	2
15	Lockwasher	256017	2	68	Seal Washer	256078	1	121	Right Frame Side Plate	256035	1	174	Muffler	218312	1
16	Grease Zerk Fitting	256018	1	*69	Reservoir O-ring	256079	2	122	Ram Retraction Spring	256143	1	175	Piston	218492	1
17	Elevator Arm Pivot Pin	256019	1	70	Pipe Plug	256081	1	123	Spring Hanger	256144	1	176	Spring	256201	1
18	Elevator Arm Washer	256021	2	71	Pump Housing	256082	1	124	Cover	256146	1	177	End Cover	218311	1
19	Elevator Arm	256022	1	72	Pump Plunger	256083	1	125	Rivet	256147	4	178	Hose Joint	256202	1
20	Grease Zerk Fitting	256023	1	73	Pump Linkage Pin	256084	1	126	Frame Spacer Bar	256148	1	179	Piston Plug	256203	1
21	Trunion Pivot Pin	256024	1	74	Cotter pin	256086	2	127	Cover Screw	256149	2	180	Bolt	218397	4
22	Trunion	256026	1	*75	Dust Seal	256087	1	128	Lockwasher	256151	2	181	Spring Washer	218314	4
23	Nut	256027	2	*76	Seal	256088	1	129	Fast Rise Locking Pawl	256152	1	*182	O-ring	218427	1
24	Trunion Bolt	256028	1	*77	Backup Ring	256089	1	130	Pawl Bolt	256153	1	*183	O-ring	218493	2
25	Caster Assembly	256010	2	*78	Copper Packing	256091	1	131	Pawl Cam	256189	1	*184	O-ring	256204	1
26	Caster Fork	256029	2	*79	O-ring	256092	1	132	Fast Rise Pull Bar	256156	1	185	Piston Plate	218489	1
27	Caster Wheel	256031	2	80	Overload Valve Cap	256093	1	133	Fast Rise Push Bar	256157	1	186	Plunger	256219	1
28	Caster Axle	256032	2	*81	Packing	256094	1	134	Fast Rise Linkage	256158	1	187	Adapter	256206	1
29	Upper Bearing Race	256033	2	82	Overload Adjustment Screw	256096	1	135	Linkage Pin	256159	1	*188	Seal	256207	1
30	Lower Bearing Race	256034	2	83	Overload Valve	256097	1	136	Pin	256161	1	*189	Back-up Ring	256208	1
31	Caster Bracket	256036	2	84	Overload Spring	256098	1	137	Pin	256162	2	190	Copper Packing	218478	1
32	Caster Mounting Bolt	256037	4	*85	Packing	256099	1	138	Nut	256163	1	*191	O-ring	256209	1
33	Ball Bearings (Set)	256015	2	86	Release Valve Housing	256101	1	139	Lockwasher	256164	1	*192	Back-up Retainer	256211	1
34	Lockwasher	256038	4	87	Release Valve	256102	1	140	Cotter Pin	256166	3	193	Bushing	256212	1
35	Caster Bushing	256039	4	88	Release Valve Shaft	256103	1	141	Fast Rise Control Rod	256167	1	194	Pump Cylinder	256221	1
36	Grease Zerk Fitting	256041	2	89	Nut	256104	1	142	Fast Rise Handle	256168	1	195	Nut	256213	2
37	Lock Nut	256042	2	*90	Copper Packing	256106	1	143	Bolt	256169	2	196	Air Valve Assembly	256200	1
38	Power Unit	256180	1	91	Release Valve Spring	256107	1	144	Expansion Pin	256171	1	197	Valve Body	256214	1
39	Cylinder Assembly	256185	1	92	Release Valve Fork	256108	1	145	Expansion Pin	256172	2	198	Nut	256216	1
40	Cylinder Nut	256043	1	93	Connecting Strap	256186	1	146	Spring	256173	1	199	O-ring	256217	1
41	Elbow Fitting	256044	2	94	Cotter Pin	256111	1	147	Washer	256174	2	200	O-ring	256218	1
42	Ram	256046	1	*95	O-ring	256112	1	148	Safety Guard	256176	1	201	Valve Packing	256219	1
43	Ram Bearing	256047	1	96	Clip Pin	256113	1	149	Handle Assembly Complete	256190	1	202	Throttle	256221	1
*44	Ram U-cup Seal	256048	1	97	Release Valve Guide Housing	256114	1	150	Pump Linkage	256177	1	203	Pump Linkage	256222	1
45	Bypass Valve Housing	256049	1	*98	Copper Packing	256116	1	*151	Copper Packing	256191	1	204	Lever	256223	1
46	Bypass Valve Pin	256051	1	99	Spring Retainer	256117	1	152	Spring	256192	1	205	Lever Pin	256224	1
47	Bypass Spring	256052	1	100	Expansion Pin	256118	1	*153	Steel Ball, 3/8" Diameter	9008	1	206	Joint Plug	256226	1
48	Bypass Checkball	256053	1	101	Cam Step	256119	1	154	Separator	256193	1	207	Bushing	256227	1
49	Copper Washer	256054	1	102	Expansion Pin	256121	1	*155	Steel Ball, 1/4" Diameter	9004	1	208	Filter	256228	1
*50	Oil Wiper Seal	256056	1	103	Collar	256122	2	156	Spring	256194	1	209	Fork Pin	256229	1
*51	Cylinder Nut Gasket	256057	1	104	Handle Receiver	256123	1	157	Pneumatic Pump Assy.	256195	1	210	Cotter Pin	256231	1
*52	O-ring	256058	1	105	Handle Receiver Bracket	256187	1	158	Cylinder	218482	1	211	Caster Bolt	256232	2
53	Nylon Oil Tube	256059	1	106	Handle Receiver Pivot Shaft	256126	1	159	Valve Body	218497	1		Repair Kit	256205	

\* The asterisk designates those parts included in Repair Kit #256205