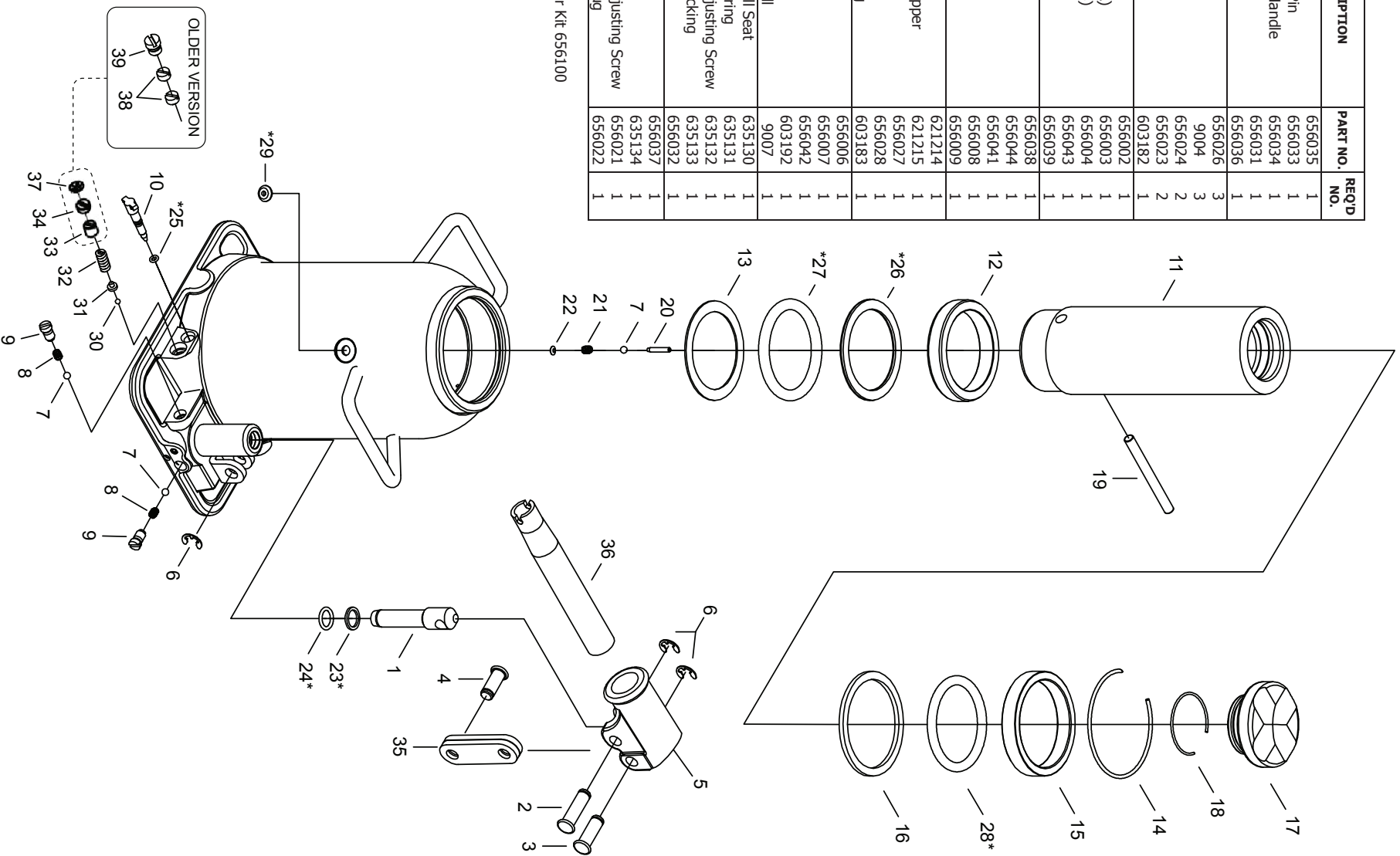


INDEX NO.	DESCRIPTION	PART NO.	REQ'D NO.
1	Pump Plunger	656035	1
2	Pump Plunger Pin	656033	1
3	Pin for Socket Handle	656034	1
4	Pump Stay Pin	656031	1
5	Handle Socket	656036	1
6	Retaining Ring	656026	3
7	1/4" Check Ball	9004	3
8	Valve Spring	656024	2
9	Valve Plug	656023	2
10	Release Valve	603182	1
11	Ram	656002	1
12	Ram Bearing (A)	656003	1
13	Ram Bearing (B)	656004	1
14	Snap Ring	656043	1
15	Upper Bearing	656039	1
16	Lower Bearing	656038	1
17	Saddle	656044	1
18	Snap Ring	656041	1
19	Horizontal Pin	656008	1
20	Vertical Pin	656009	1
21	Ram Spring	621214	1
22	Ram Spring Stopper	621215	1
*23	Backup Ring	656027	1
*24	O-Ring	656028	1
*25	Release Packing	603183	1
*26	Backup Ring	656006	1
*27	O-Ring	656007	1
*28	O-Ring	656042	1
*29	Oil Plug	603192	1
30	3/16" Check Ball	9007	1
31	Safety Valve Ball Seat	635130	1
32	Safety Valve Spring	635131	1
33	Safety Valve Adjusting Screw	635132	1
34	Safety Valve Packing	635133	1
35	Pump Stay	656032	1
36	Handle	656037	1
37	Push Nut	635134	1
38	Safety Valve Adjusting Screw	656021	1
39	Safety Valve Plug	656022	1

*Items in Repair Kit 656100



REPLACEMENT PARTS

MODEL NO.
76560

CAPACITY
60 TON

DESCRIPTION
BOTTLE JACK

